



BACKYARD

— P A R A D I S O —



Standard Container House

Scenarios



Size:L5950mm*W3000mm*H2800mm

Application



Assemble Container House **A1**

○ 1 Living Room

● 1 Kitchen

● 1 Bedroom

○ 1 bathroom

○ 1 toilet

Size: L5950mm*W3000mm*H2800mm



17M
2

Assemble Container House **A2**

- 1 Living Room
- 1 Kitchen
- 1 Bedroom
- 1 bathroom
- 1 toilet

Size: L5950mm*W3000mm*H2800mm



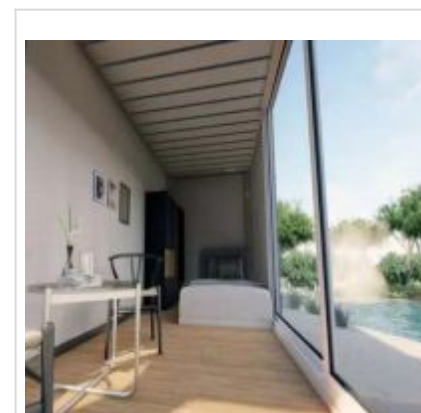
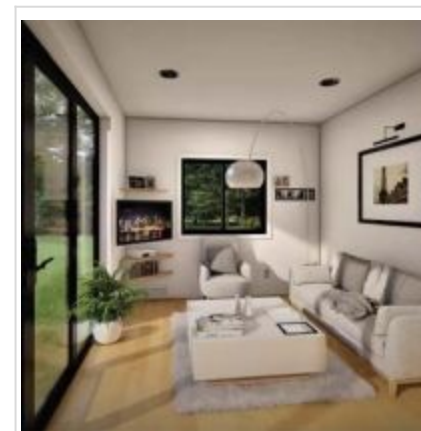
17M
2

Assemble Container House A3

o 1 Living Room
● 1 Bedroom

e 1 bathroom
o 1 toilet

**Size:L5950mm*W3000mm*H2800m
m**

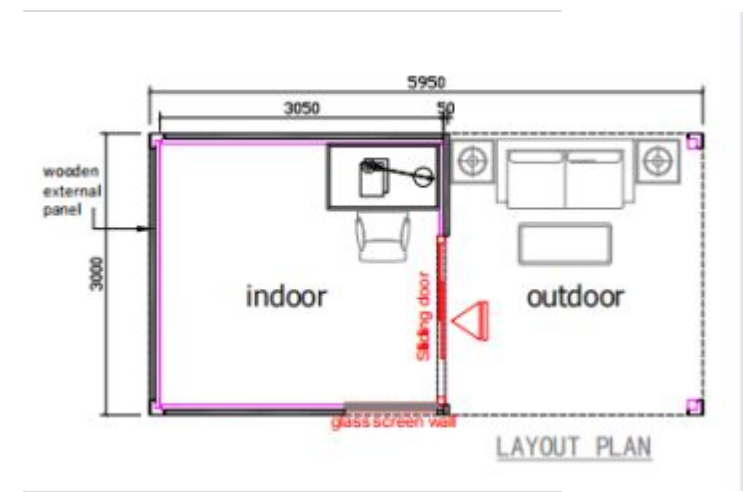
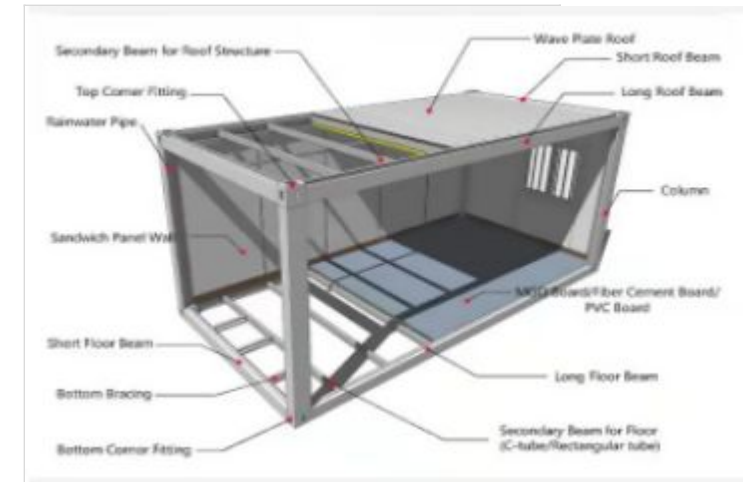
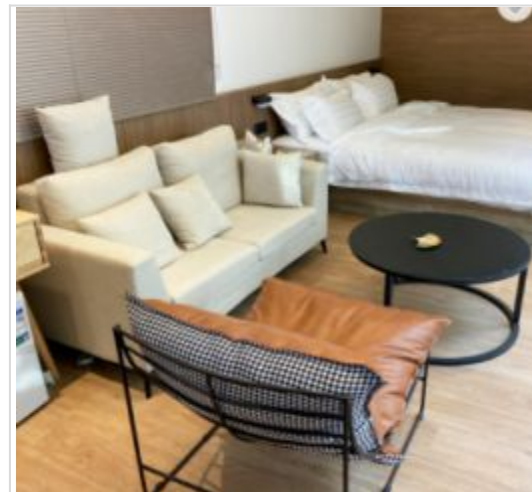


17M
2

Assemble Container House A4

- 1 Living Room
- 1 Kitchen
- 1 Bedroom
- 1 bathroom

Size: L5950mm*W3000mm*H2800mm



Assemble Container House **A5**

o 1 Living Room
● 1 Bedroom

e 1 bathroom
o 1 toilet

Size: L5950mm*W3000mm*H2800mm



17M
2

Assemble Container House **A6**

○ 2 Living Room

● 1 Kitchen

● 2 Bedroom

● 1 bathroom

○ 1 toilet

Size: L7200mm*W5900mm*H2800mm



42M²

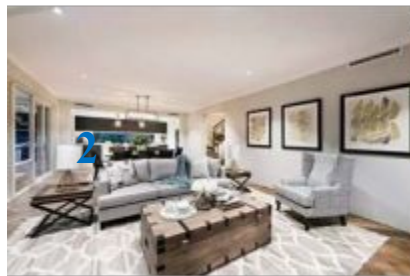
Assemble Container House

A1

- 1 Living Room
- Kitchen
- 1 Bedroom bathroom
- 2 toilet



Size:L5950mm*W9000mm*H2800mm



2



53M
2

Assembled Container House

A8



○ 1 Living Room

1 Kitchen



○ 1 Dining Room

3 Bedroom



2 bathroom

2 toilet

Size: L12000mm*W5950mm*H2800mm



68M
2



BACKYARD
— PARADISO —

Assemble Container House

A9

4 container house

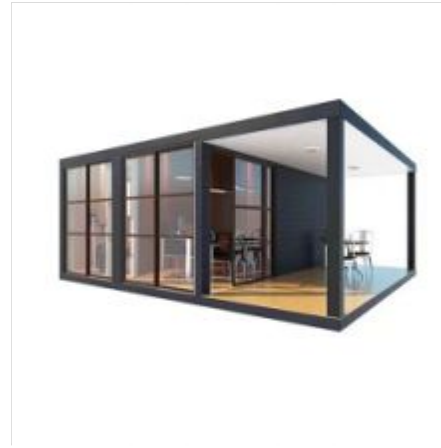
(Size:L8000mm*W4000mm*H2800mm)



Assemble Container House **A10**

- 1 Living Room
- 1 Kitchen
- 1 Dining Room
- 2 Bedroom
- 1 bathroom
- 1 toilet

Size:L9000mm*W5950mm*H2800mm

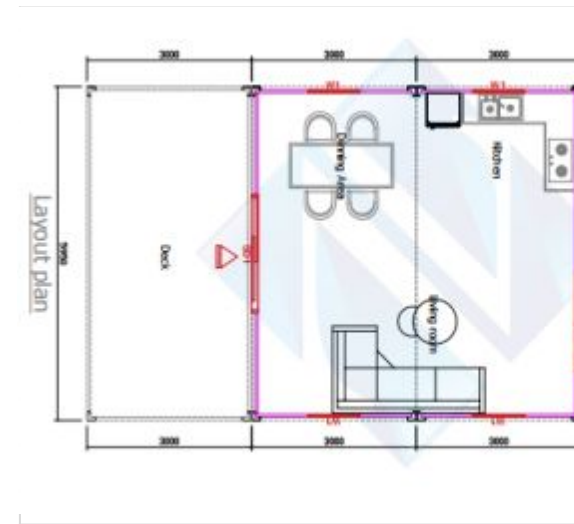
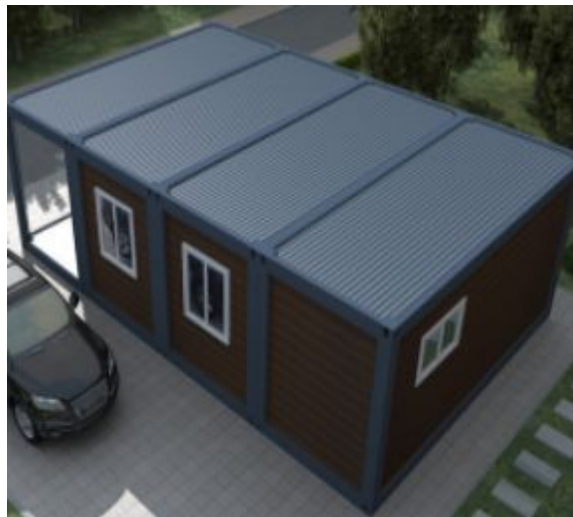


54M²

Assemble Container House **A11**

- 1 Living Room
- 1 Kitchen
- 2 Bedroom
- 2 bathroom
- 2 toilet

Size:L5950mm*W6000mm*H5600mm



Assemble Container House B1

- 1 Living Room
- 1 Kitchen
- 2 Bedroom
- 2 bathroom
- 2 toilet

Size: L5950mm*W6000mm*H5600mm



1FLOOR(34m²)

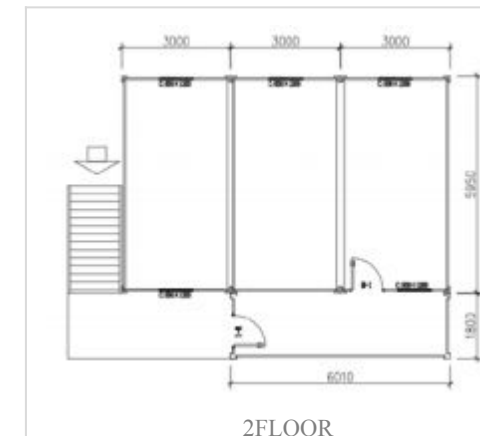


2FLOOR(17m²)

Assemble Container House B2

- 1 Living Room
- 1 Kitchen
- 2 Bedroom
- 2 bathroom
- 2 toilet

Size:L5950mm*W6000mm*H5600mm



Assemble Container House

B3

- 1 Living Room
- 1 Kitchen
- 4 bathroom
- 2 toilet



Size:L5950mm*W6000mm*H5600mm



Assemble Container House B4



2units of Assemble Container with 1 units House container without wall panier

and 3units 1/2 container house Size:5.95m*3.0m*2.8m

Assemble Container House

B5

**2units of Assemble
Container**

**with 1 units House
container**

without wall panier and

1units 1/2 container house

Size:5.95m*3.0m*2.8m



Assemble Container House B6



3units of Assemble Container House
Size:5.95m*3.0m*2.8m
wood exterior wall and Glass Wall 68Sq.m

Assemble e Container r House

B7

**3Units of Assemble
Container
House 1units 1/2 container**

**Size:5.95m*3.0m*2.8
m**

with stone exterior wall and

**Glass Wall
36Sq.m**



Assemble Container House B8



3units of Assemble Container House with 1units 1/2
contanier house Size:5.95m x 2.8m
with Glass Wal 75.6Sq.m

Assemble Container House

B9

**3units of Assemble
Container House with
3units 1/2 containier
house**

Size:5.95m*3.0m*2.8m



Assemble Container House **B10**



**3units of Assemble Container House with 1units containier
house
without wall panier
Size:5.95m*3.0m*2.8m**

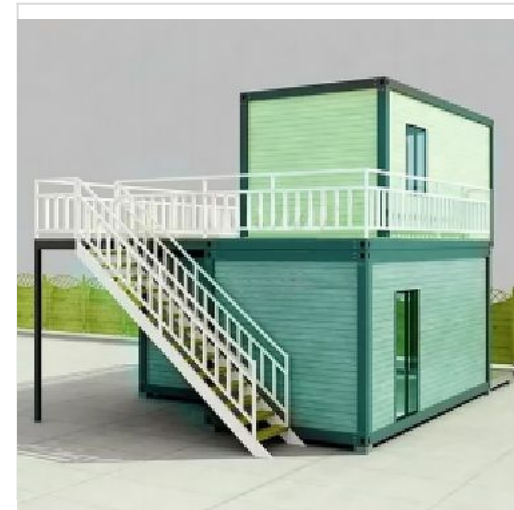
Assemble Container House

B11

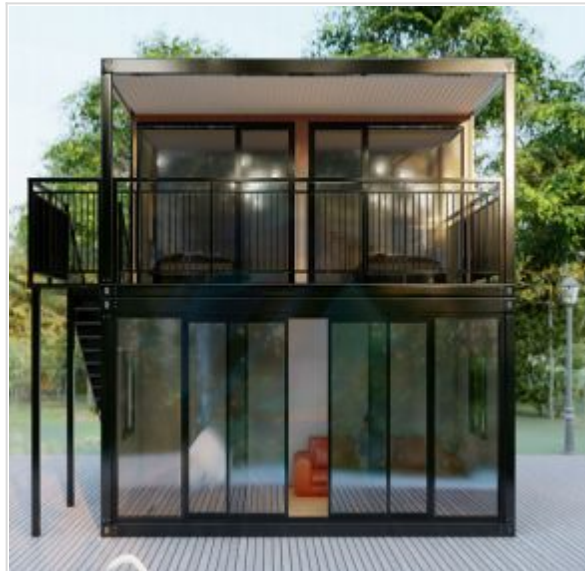
3units of Assemble
Container
House with 1units 1/2 container
house **Size:5.95m*3.0m*2.8m**

and wood exterior wall with

Glass wall **25.8Sq.m**



Assemble Container House **B12**



4units of Assemble Container House

Size:5.95m*3.0m*2.8m

wiht Glass Wall and wood exterior wall

71.4Sq.m

Assemble Container House

B13

**3units of Assemble Container
House with 1units 1/2
cont...er
house without wall panier**

Size:5.95m*3.0m*2.8m



B14 CONTAINER COMBINATION

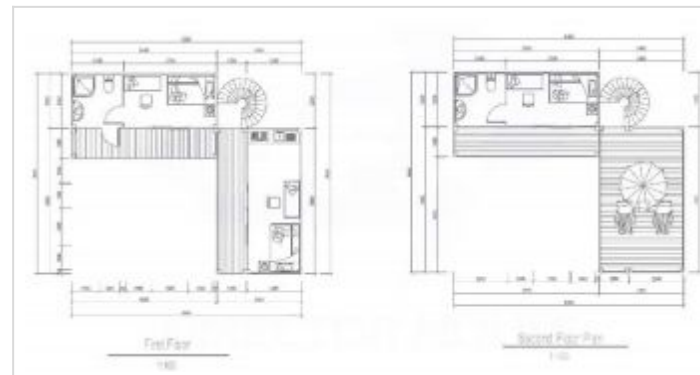
60M²

3units of Assemble Container House
with 1units 1/2 container house
without

Size:5.95m*3.0m*2.8m

wood exterior wall and Glass wall

33.6Sq.m



BACKYARD
— PARADISO —

Assemble Container House

B15

**5units of Assemble Container House
with 1units 1/2 container house**

without wall panier

**Size:5.95m*3.0m*2.8m and wood
exterior with Glass wall 16.8Sq.m**



Assemble Container House B16



5units of Assemble Container House with 2units 1/2 container house Size:5.95m*3.0m*2.8m

and Glass wall. 125Sq.m

Assemble Container House

B17

**5units of Assemble Container
House with 2units 1/2**

contanier house

Size:5.95m*3.0m*2.8m

and Glass wall



Assemble Container House B18



12units of Assemble Container House with 4units 1/2 container house without wall panier Size:5.95m*3.0m*2.8m and Glass wall 50.4Sq.m

Assemble Container House

B19

5Floor one-standard container

(Size: L5950mm*W3000mm*H2800mm)



Assemble Container House

B20



**6units of Assemble
Container House with 6units
walk conopy**

Size:5.95m*3.0m*2.8m



Installation tools



Electric Drill



Sleeve



Tapper



Cutting Machine



Wire Drop



Hammer



Levelling Instrument



Glue Gun

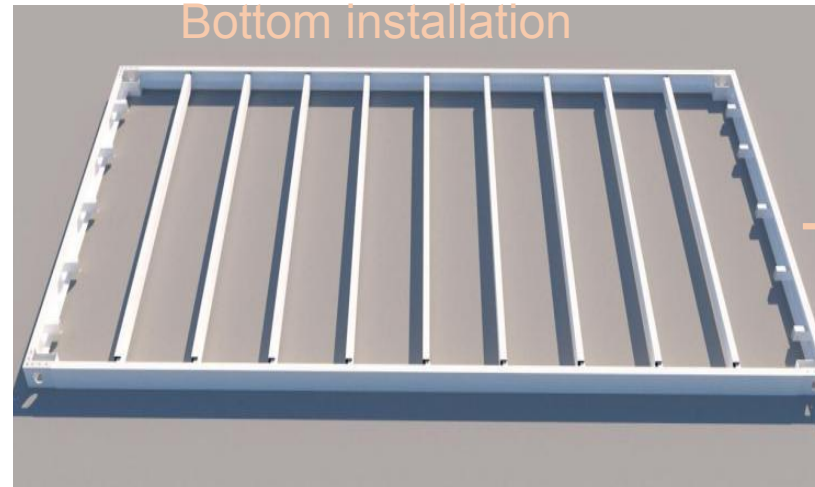


Wrench

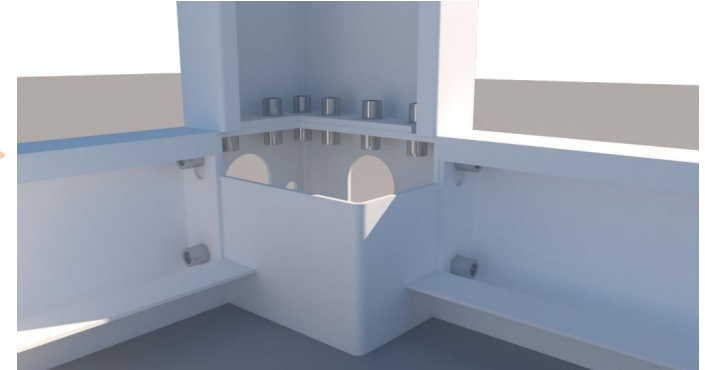


Hitter

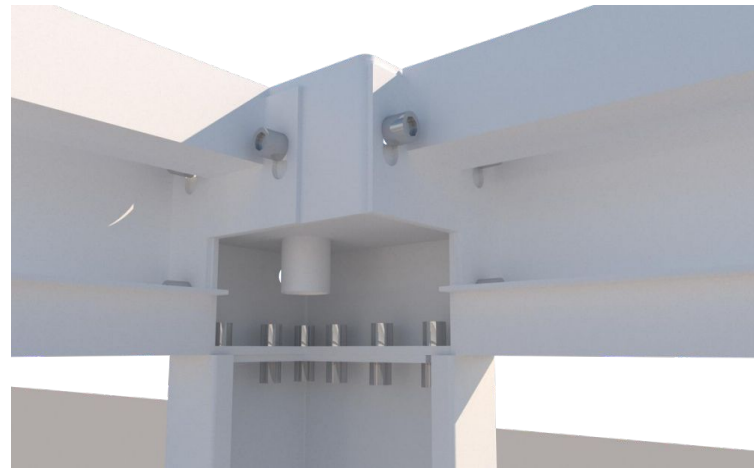
Installation Instruction 1



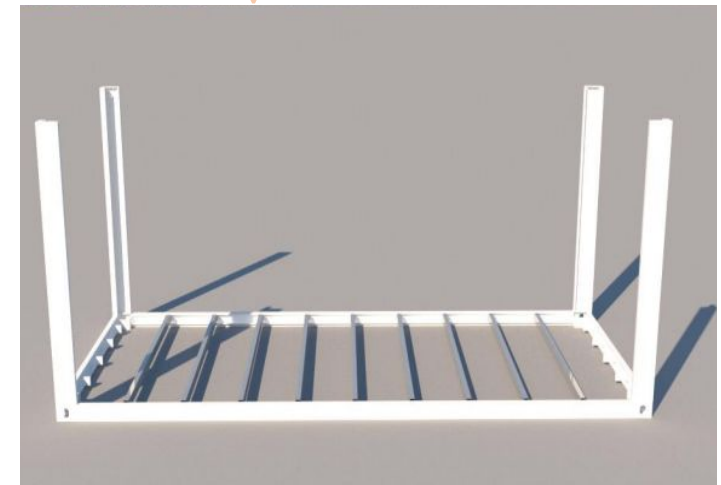
Connect column and bottom frame



Connect top frame and column

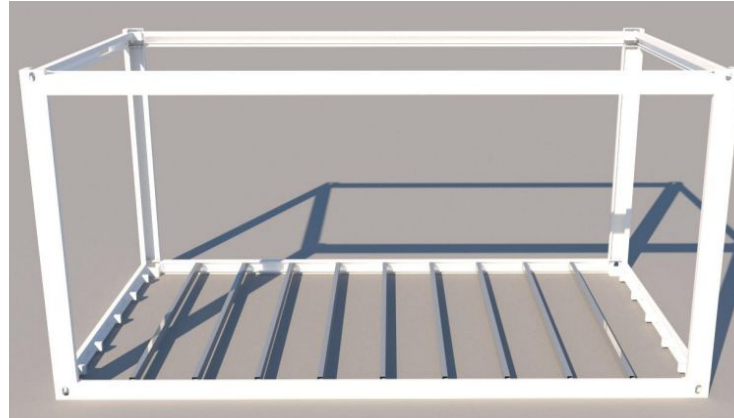


Installed columns

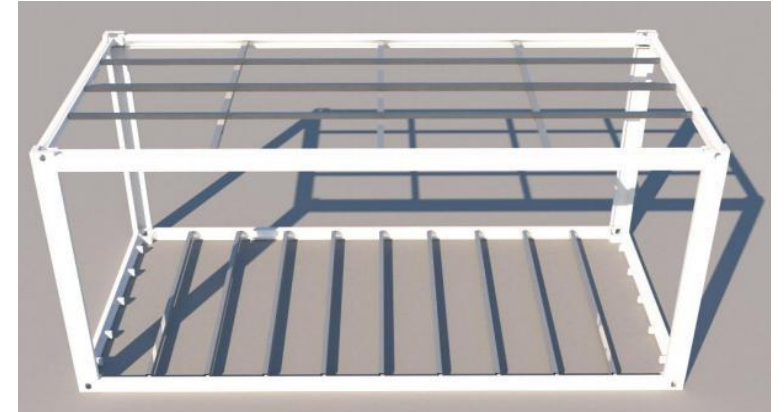


Installation Instruction 2

assemble top frame



assemble top purlins



Installation top ceiling and glass
fiber insulation



Install water pipes

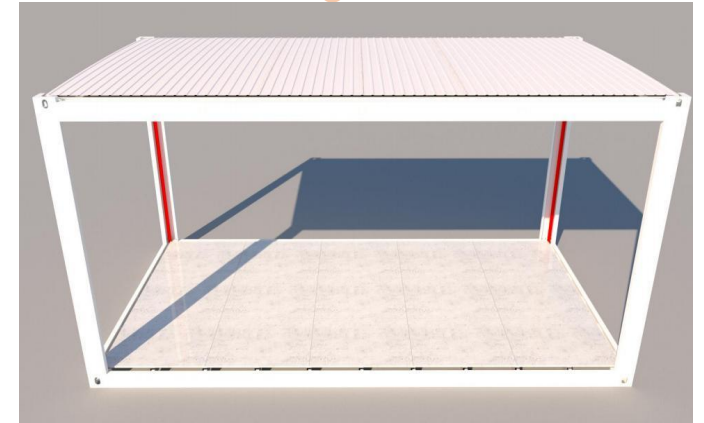


Installation Instruction 3

Install exterior roof tile



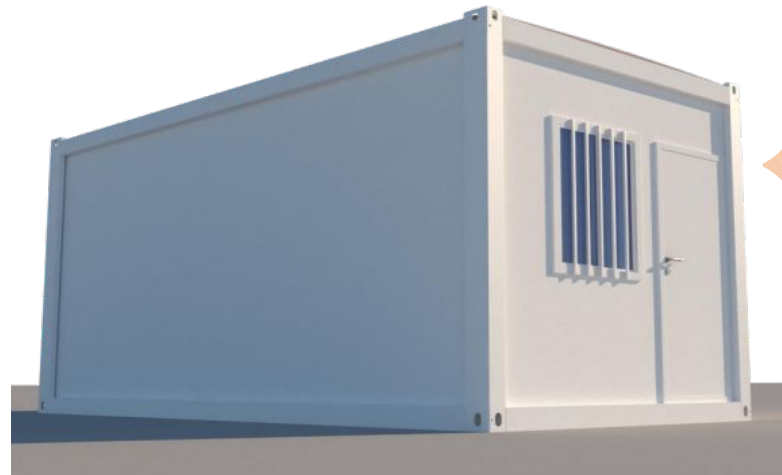
Install ground board



Installation window ,door
and wall panel

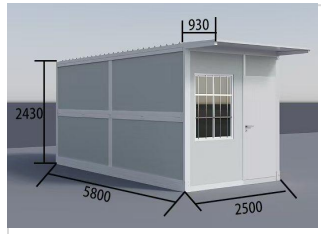
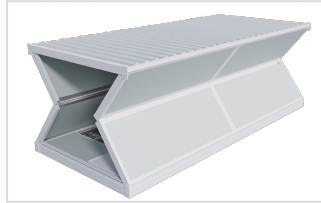
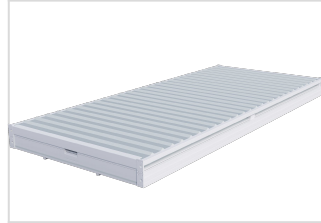


Finish installation





20FT **Folding Container** **House F1**



Size before Expanding
L5800mm*W2500*H390
mm



Size after Expanding
L5800*W2500mm*H24
30mm



FEX1 20FT Expandable Container House 37M²

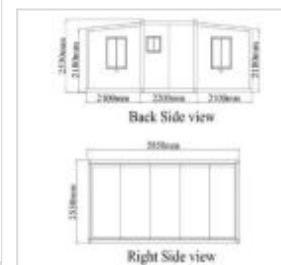
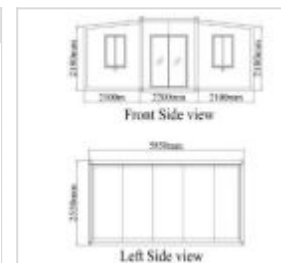
- 1 Living Room
- 2 Bedroom
- 1 bathroom
- 1 toilet

Expansion

size:L6150mm*W5800mm*H2480,2250mm

Folding

size:L5800mm*W2250mm*H2500mm



FEX2 20FT Expandable Container House 37M²

Solar System



Expansion

size:L5800mm*W6100mm*H2500mm Folding

size:L5800mm*W2100mm*H2500mm

DIFFERENT LAYOUT



One Living room
One Bedroom
One Restroom



One Living room
One Bedroom room
One Restroom



One Living room
Two Bedrooms
One Restroom



One Living room
Two Bedroom
One Restroom



One Living room
Three Bedrooms
One Restroom



One Living room
Three Bedrooms
One Restroom

20FT

Expandable Container House

37M²

Expansion

size:L5800mm*W6100mm*H2500mm

Folding size:L5800mm*W2100mm*H2500mm

Application Scenarios



-Camping-



-Home-



-Hotel-



-Resort House-



-Movable House-



-Farm House-



-Office-



-Military Camp-



-Prefab Hospital-

SentryBox//Guard ROOM G1



Summer heat insulation,winter windproof,air conditioning is not easy to disperse,excellent sealing and noise reduction effect

Portable Toilete

T1



Specifications and Layout Drawings

T2



| ZCS - 05 | | |
|---------------|----------------------|--------|
| Dimensions | L | 5950mm |
| | W | 3000mm |
| | H | 2800mm |
| Area | 17.85 m ² | |
| Configuration | Toilet Wash basin | |
| Floor Plan | | |
| | | |
| | | |

| ZCS - 06 | | |
|---------------|----------------------|--------|
| Dimensions | L | 5950mm |
| | W | 3000mm |
| | H | 2800mm |
| Area | 17.85 m ² | |
| Configuration | Toilet Wash basin | |
| Floor Plan | | |
| | | |
| | | |

| ZCS - 07 | | |
|---------------|----------------------|--------|
| Dimensions | L | 5950mm |
| | W | 3000mm |
| | H | 2800mm |
| Area | 17.85 m ² | |
| Configuration | Shower room | |
| Floor Plan | | |
| | | |
| | | |

| ZCS - 08 | | |
|---------------|--------------------|--------|
| Dimensions | L | 3000mm |
| | W | 2250mm |
| | H | 2500mm |
| Area | 6.75m ² | |
| Configuration | | |
| Floor Plan | | |
| | | |
| | | |